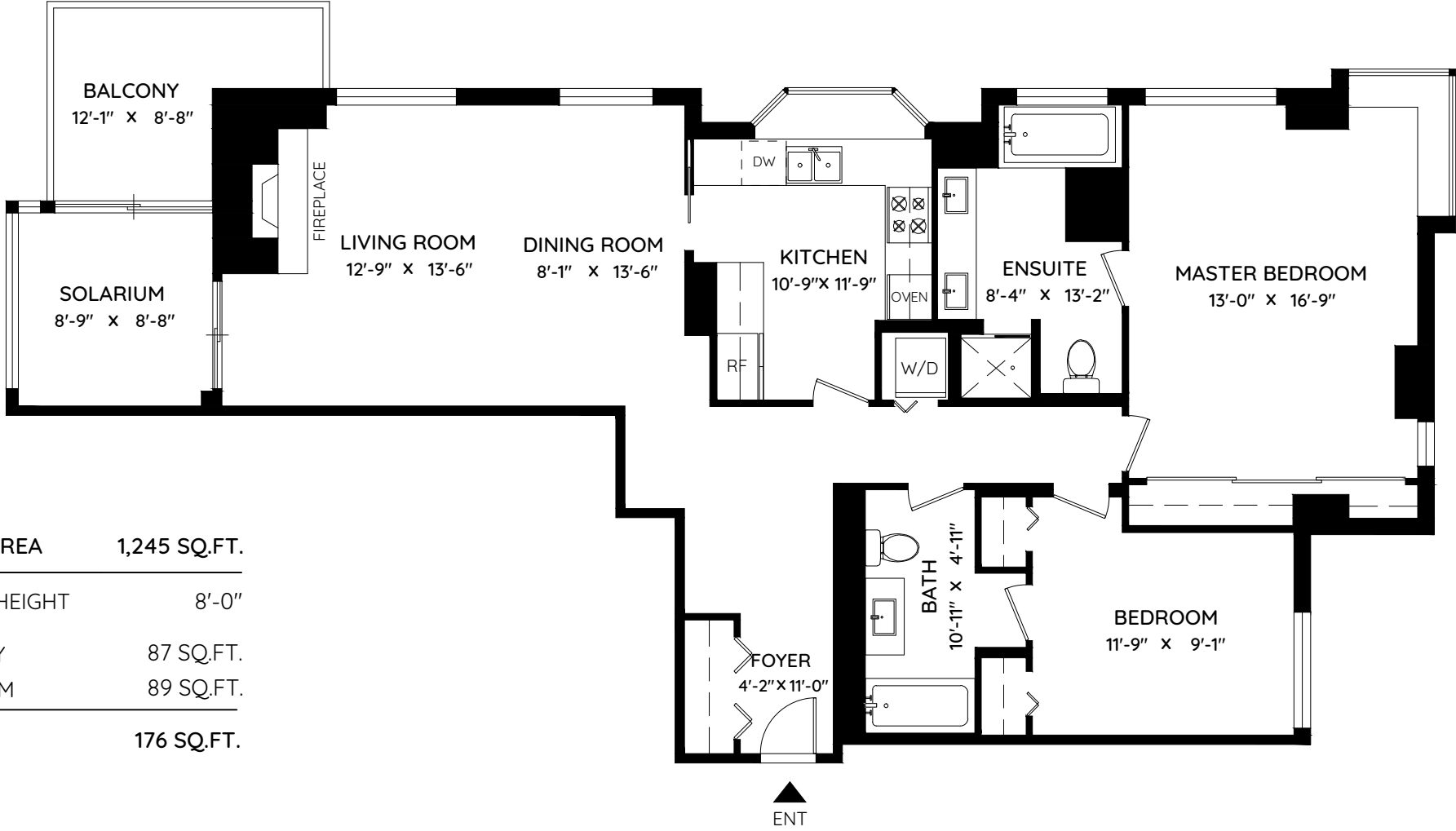
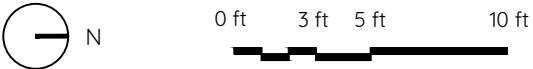


503 - 2288 WEST 40TH AVENUE

VANCOUVER, BC



LIVING AREA	1,245 SQ.FT.
CEILING HEIGHT	8'-0"
BALCONY	87 SQ.FT.
SOLARIUM	89 SQ.FT.
TOTAL	176 SQ.FT.



The floor plan and the measurements are approximate within +/- 2% and are to be used for advertising usage only. May include unfinished area. Not suitable for architectural or construction. E&O Insured